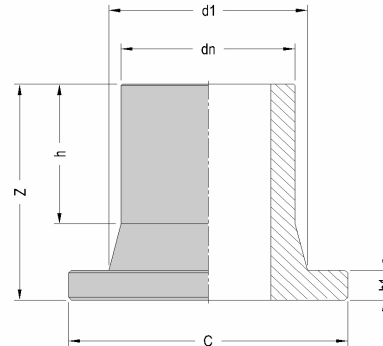




PRODUCT DETAILS



DIMENSIONS AND WEIGHT



ITEM	<b>2030100050</b>
dn [mm]	50
dn1 [mm]	
SDR	17
PN	10
MATERIAL	PE100
TRADEMARK	EURO
MANUFACTURING TYPE	INJECTION MOULDED
USE	WATER-GAS
QUANTITY PER BOX	15

dn	[mm]	50	
h	[mm]	62	
h1	[mm]	12	
Z	[mm]	88	
d1	[mm]	61	
C	[mm]	88	
			WEIGHT [g] 100

Tolerance: +/- 5% excluding dn

NOTE:

MARKING AND LABEL on fitting



PE100 d50 PN10/SDR17

STANDARDS AND APPROVALS

- EN 12201
- EN 1555
- ISO 15494
- DVGW

INFOS

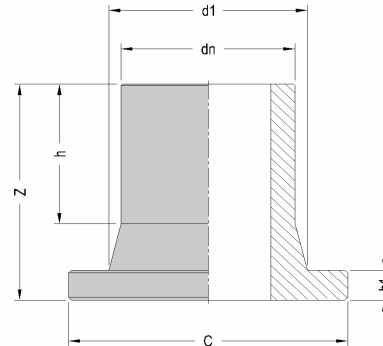
- Moulded in PE 100 with long collar
- Buttfusion unadvised

All dimensions are in millimeters and are intended as nominal and standard sizes: weights are in grams. EUROSTANDARD reserves the right to change geometries and dimensions of any product.

## PRODUCT DETAILS



## DIMENSIONS AND WEIGHT



ITEM	<b>2030100063</b>
dn [mm]	63
dn1 [mm]	
SDR	17
PN	10
MATERIAL	PE100
TRADEMARK	EURO
MANUFACTURING TYPE	INJECTION MOULDED
USE	WATER-GAS
QUANTITY PER BOX	8

dn	[mm]	63	
h	[mm]	66	
h1	[mm]	14	
Z	[mm]	98	
d1	[mm]	75	
C	[mm]	102	
			WEIGHT [g]
			145

Tolerance: +/- 5% excluding dn

NOTE:

## MARKING AND LABEL on fitting



PE100 d63 PN10/SDR17

## STANDARDS AND APPROVALS

EN 12201  
EN 1555  
ISO 15494  
DVGW

## INFOS

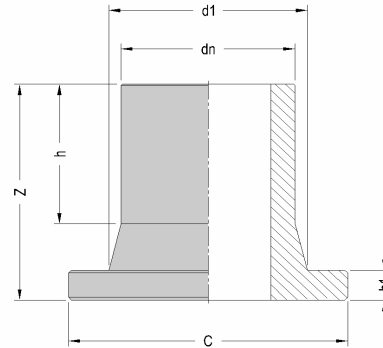
- Moulded in PE 100 with long collar

All dimensions are in millimeters and are intended as nominal and standard sizes: weights are in grams. EUROSTANDARD reserves the right to change geometries and dimensions of any product.

PRODUCT DETAILS



DIMENSIONS AND WEIGHT



ITEM	<b>2030100075</b>
dn [mm]	75
dn1 [mm]	
SDR	17
PN	10
MATERIAL	PE100
TRADEMARK	EURO
MANUFACTURING TYPE	INJECTION MOULDED
USE	WATER-GAS
QUANTITY PER BOX	13

dn	[mm]	75	
h	[mm]	74	
h1	[mm]	16	
Z	[mm]	116	
d1	[mm]	89	
C	[mm]	122	
			WEIGHT [g]
			250

Tolerance: +/- 5% excluding dn

NOTE:

MARKING AND LABEL on fitting



PE100 d75 PN10/SDR17

STANDARDS AND APPROVALS

EN 12201  
EN 1555  
ISO 15494  
DVGW

INFOS

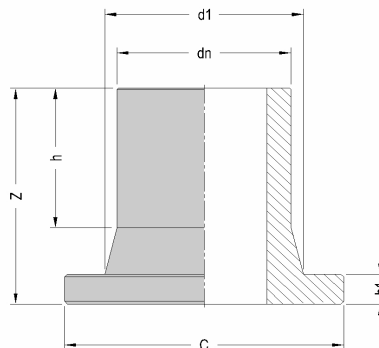
- Moulded in PE 100 with long collar

All dimensions are in millimeters and are intended as nominal and standard sizes: weights are in grams.  
EUROSTANDARD reserves the right to change geometries and dimensions of any product.

**PRODUCT DETAILS**



**DIMENSIONS AND WEIGHT**



ITEM	<b>2030100090</b>
dn [mm]	90
dn1 [mm]	
SDR	17
PN	10
MATERIAL	PE100
TRADEMARK	EURO
MANUFACTURING TYPE	INJECTION MOULDED
USE	WATER-GAS
QUANTITY PER BOX	9

dn	[mm]	90	
h	[mm]	98	
h1	[mm]	17	
Z	[mm]	140	
d1	[mm]	105	
C	[mm]	138	
WEIGHT	[g]	350	

Tolerance: +/- 5% excluding dn

NOTE:

**MARKING AND LABEL on fitting**



PE100 d90 PN10 SDR17

**STANDARDS AND APPROVALS**

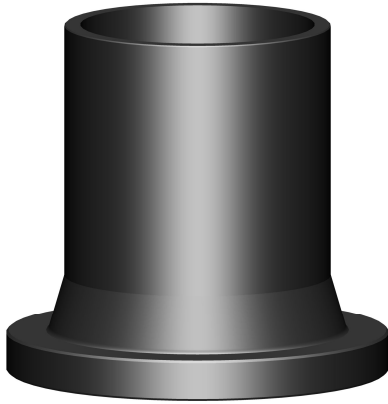
- EN 12201
- EN 1555
- ISO 15494
- DVGW

**INFOS**

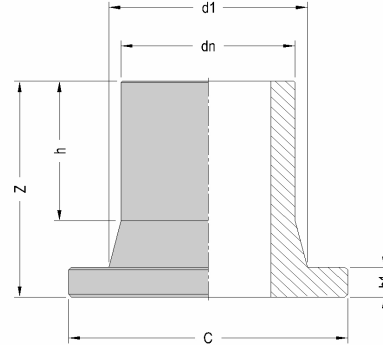
- Moulded in PE 100 with long collar

All dimensions are in millimeters and are intended as nominal and standard sizes: weights are in grams. EUROSTANDARD reserves the right to change geometries and dimensions of any product.

**PRODUCT DETAILS**



**DIMENSIONS AND WEIGHT**



ITEM	<b>2030100110</b>
dn [mm]	110
dn1 [mm]	
SDR	17
PN	10
MATERIAL	PE100
TRADEMARK	EURO
MANUFACTURING TYPE	INJECTION MOULDED
USE	WATER-GAS
QUANTITY PER BOX	6

NOTE:

**STANDARDS AND APPROVALS**

EN 12201  
EN 1555  
ISO 15494  
DVGW

**INFOS**

- Moulded in PE 100 with long collar

dn	[mm]	110	
h	[mm]	112	
h1	[mm]	18	
Z	[mm]	155	
d1	[mm]	125	
C	[mm]	158	
			<b>WEIGHT [g]</b> 485

Tolerance: +/- 5% excluding dn

**MARKING AND LABEL on fitting**



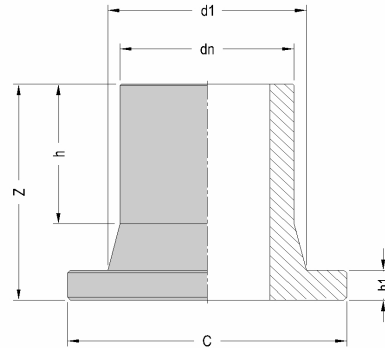
PE100 d110 PN10 SDR17

All dimensions are in millimeters and are intended as nominal and standard sizes: weights are in grams. EUROSTANDARD reserves the right to change geometries and dimensions of any product.

**PRODUCT DETAILS**



**DIMENSIONS AND WEIGHT**



ITEM	<b>2030100125</b>
dn [mm]	125
dn1 [mm]	
SDR	17
PN	10
MATERIAL	PE100
TRADEMARK	EURO
MANUFACTURING TYPE	INJECTION MOULDED
USE	WATER-GAS
QUANTITY PER BOX	1

dn	[mm]	125	
h	[mm]	93	
h1	[mm]	18	
Z	[mm]	131	
d1	[mm]	132	
C	[mm]	158	
WEIGHT	[g]	505	

Tolerance: +/- 5% excluding dn

**MARKING AND LABEL on fitting**



PE100 d125 PN10/SDR17

**STANDARDS AND APPROVALS**

- EN 12201
- EN 1555
- ISO 15494
- DVGW

**INFOS**

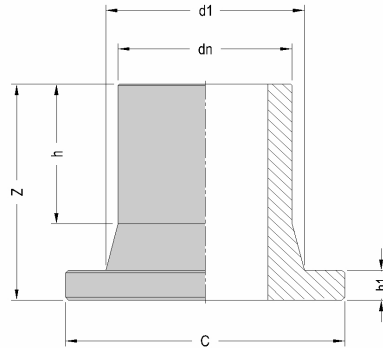
- Moulded in PE 100 with long collar

All dimensions are in millimeters and are intended as nominal and standard sizes: weights are in grams. EUROSTANDARD reserves the right to change geometries and dimensions of any product.

**PRODUCT DETAILS**



**DIMENSIONS AND WEIGHT**



ITEM	<b>2030100140</b>
dn [mm]	140
dn1 [mm]	
SDR	17
PN	10
MATERIAL	PE100
TRADEMARK	EURO
MANUFACTURING TYPE	INJECTION MOULDED
USE	WATER-GAS
QUANTITY PER BOX	1

dn	[mm]	140	
h	[mm]	104	
h1	[mm]	18	
Z	[mm]	154	
d1	[mm]	155	
C	[mm]	187	

**WEIGHT** [g] 895

Tolerance: +/- 5% excluding dn

**MARKING AND LABEL on fitting**



PE100 d140 PN10/SDR17

**STANDARDS AND APPROVALS**

EN 12201  
EN 1555  
ISO 15494  
DVGW

**INFOS**

- Moulded in PE 100 with long collar

All dimensions are in millimeters and are intended as nominal and standard sizes: weights are in grams.  
EUROSTANDARD reserves the right to change geometries and dimensions of any product.





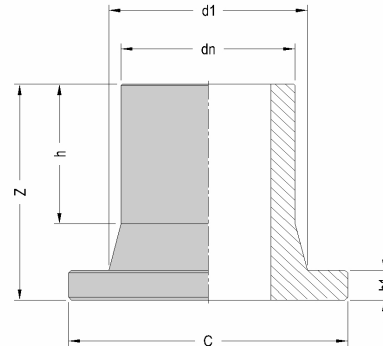




**PRODUCT DETAILS**



**DIMENSIONS AND WEIGHT**



ITEM	<b>2030100225</b>
dn [mm]	225
dn1 [mm]	
SDR	17
PN	10
MATERIAL	PE100
TRADEMARK	EURO
MANUFACTURING TYPE	INJECTION MOULDED
USE	WATER-GAS
QUANTITY PER BOX	1

dn	[mm]	225	
h	[mm]	125	
h1	[mm]	24	
Z	[mm]	190	
d1	[mm]	235	
C	[mm]	268	
			WEIGHT [g] 2130

Tolerance: +/- 5% excluding dn

**MARKING AND LABEL on fitting**



PE100 d225 PN10/SDR17

**STANDARDS AND APPROVALS**

- EN 12201
- EN 1555
- ISO 15494
- DVGW

**INFOS**

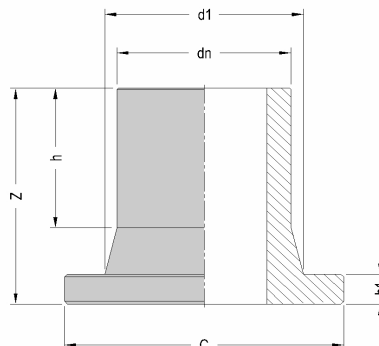
- Moulded in PE 100 with long collar

All dimensions are in millimeters and are intended as nominal and standard sizes: weights are in grams.  
EUROSTANDARD reserves the right to change geometries and dimensions of any product.

**PRODUCT DETAILS**



**DIMENSIONS AND WEIGHT**



ITEM	<b>2030100250</b>
dn [mm]	250
dn1 [mm]	
SDR	17
PN	10
MATERIAL	PE100
TRADEMARK	EURO
MANUFACTURING TYPE	INJECTION MOULDED
USE	WATER-GAS
QUANTITY PER BOX	1

dn	[mm]	250	
h	[mm]	134	
h1	[mm]	25	
Z	[mm]	205	
d1	[mm]	285	
C	[mm]	320	
			WEIGHT [g]
			3370

Tolerance: +/- 5% excluding dn

NOTE:

**MARKING AND LABEL on fitting**



PE100 d250 PN10/SDR17

**STANDARDS AND APPROVALS**

- EN 12201
- EN 1555
- ISO 15494
- DVGW

**INFOS**

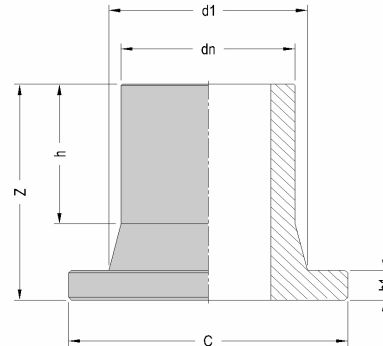
- Moulded in PE 100 with long collar

All dimensions are in millimeters and are intended as nominal and standard sizes: weights are in grams.  
EUROSTANDARD reserves the right to change geometries and dimensions of any product.

## PRODUCT DETAILS



## DIMENSIONS AND WEIGHT



ITEM	<b>2030100280</b>
dn [mm]	280
dn1 [mm]	
SDR	17
PN	10
MATERIAL	PE100
TRADEMARK	EURO
MANUFACTURING TYPE	INJECTION MOULDED
USE	WATER-GAS
QUANTITY PER BOX	1

dn	[mm]	280	
h	[mm]	165	
h1	[mm]	25	
Z	[mm]	220	
d1	[mm]	291	
C	[mm]	320	
			WEIGHT [g] 3400

Tolerance: +/- 5% excluding dn

NOTE:

## MARKING AND LABEL on fitting



PE100 d280 PN10 SDR17

## STANDARDS AND APPROVALS

EN 12201  
 EN 1555  
 ISO 15494  
 DVGW

## INFOS

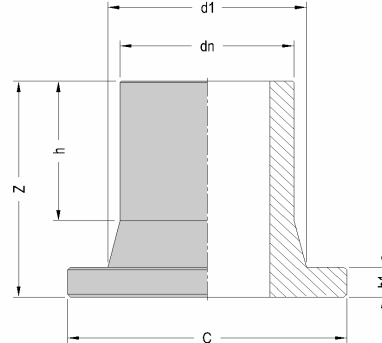
- Moulded in PE 100 with long collar

All dimensions are in millimeters and are intended as nominal and standard sizes: weights are in grams. EUROSTANDARD reserves the right to change geometries and dimensions of any product.

## PRODUCT DETAILS



## DIMENSIONS AND WEIGHT



ITEM	<b>2030100315</b>
dn [mm]	315
dn1 [mm]	
SDR	17
PN	10
MATERIAL	PE100
TRADEMARK	EURO
MANUFACTURING TYPE	INJECTION MOULDED
USE	WATER-GAS
QUANTITY PER BOX	1

dn	[mm]	315
h	[mm]	202
h1	[mm]	25
Z	[mm]	267
d1	[mm]	335
C	[mm]	370

WEIGHT	[g]	5300
--------	-----	------

Tolerance: +/- 5% excluding dn

## NOTE:

stub end complete with NBR gasket

## MARKING AND LABEL on fitting



PE100 d315 PN10/SDR17

## STANDARDS AND APPROVALS

EN 12201  
EN 1555  
ISO 15494  
DVGW

## INFOS

- Moulded in PE 100 with long collar

All dimensions are in millimeters and are intended as nominal and standard sizes: weights are in grams.  
EUROSTANDARD reserves the right to change geometries and dimensions of any product.

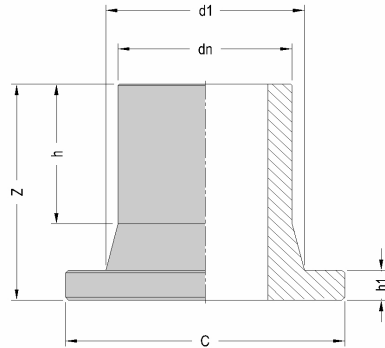




**PRODUCT DETAILS**



**DIMENSIONS AND WEIGHT**



ITEM	<b>2030100400</b>
dn [mm]	400
dn1 [mm]	
SDR	17
PN	10
MATERIAL	PE100
TRADEMARK	EURO
MANUFACTURING TYPE	INJECTION MOULDED
USE	WATER-GAS
QUANTITY PER BOX	1

dn	[mm]	400
h	[mm]	230
h1	[mm]	38
Z	[mm]	308
d1	[mm]	427
C	[mm]	482

WEIGHT	[g]	10500
--------	-----	-------

Tolerance: +/- 5% excluding dn

**MARKING AND LABEL on fitting**



PE100 d400 SDR17 PN10

**STANDARDS AND APPROVALS**

EN 12201  
 EN 1555  
 ISO 15494  
 DVGW

**INFOS**

- Moulded in PE 100 with long collar

*All dimensions are in millimeters and are intended as nominal and standard sizes: weights are in grams. EUROSTANDARD reserves the right to change geometries and dimensions of any product.*