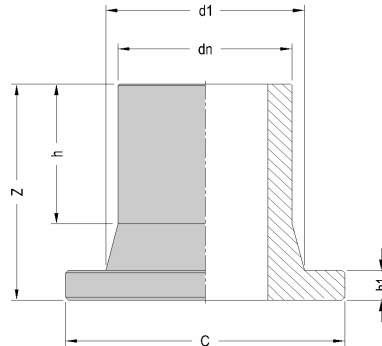


PRODUCT DETAILS



DIMENSIONS AND WEIGHT



ITEM	2030160355
dn [mm]	355
dn1 [mm]	
SDR	11
PN	16
MATERIAL	PE100
TRADEMARK	EURO
MANUFACTURING TYPE	INJECTION MOULDED
USE	WATER-GAS
QUANTITY PER BOX	1

dn	[mm]	355	
h	[mm]	200	
h1	[mm]	40	
Z	[mm]	280	
d1	[mm]	373	
C	[mm]	430	
			WEIGHT [g]
			12640

Tolerance: +/- 5% excluding dn

NOTE:
stub end complete with NBR gasket

MARKING AND LABEL on fitting



PE100 d355 SDR11 PN16

STANDARDS AND APPROVALS

EN 12201
EN 1555
ISO 15494
DVGW

INFOS

- Moulded in PE 100 with long collar

All dimensions are in millimeters and are intended as nominal and standard sizes: weights are in grams. EUROSTANDARD reserves the right to change geometries and dimensions of any product.

